

Mini Wedge Type Quick Change Toolpost Set

Feature:

- All steel construction.
- Quickly and easily installed on your lathe.
- Interchangeable with many other manufacturer's components.
- Precision-engineered to assure repetitive accuracy. All working parts precision ground and hardened.
- Perfect for 7 x 10" , 7 x 12" , 7 x 14" mini lathe
- FOR LATHES WITH SWING 6 – 9"

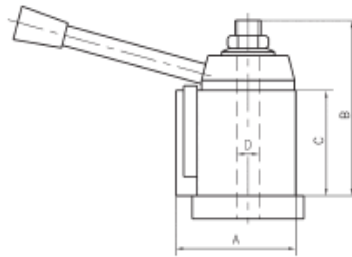


Product description:

- 250-000 Tool Post
- 250-001 #1 Turning & Facing Holder
- 250-002 #2 Boring, Turning & Facing Holder
- 250-004 #4 Heavy-Duty Boring Bar Holder
- 250-007 #7 Universal Parting Blade Holder
- 250-010 #10 Knurling, Turning & Facing Holder

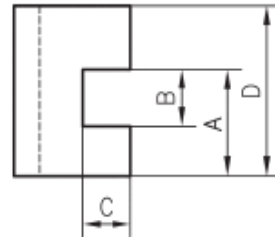
Detailed dimension:

1).GIB TYPE TOOL POST 250-000 Tool Post



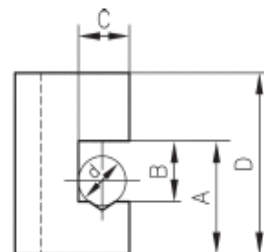
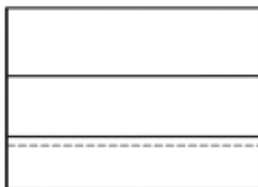
Order No.	A(in)	B(in)	C(in)	D(in)	Swing dia(in)
250-000	1.75	2.95	1.57	0.4	8

2).Turning and Facing Holder



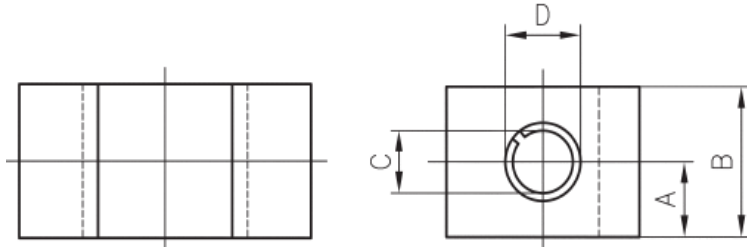
Order No.	A(in)	B(in)	C(in)	D(in)	Tool bit range(in)
250-001	0.66	0.5	0.327	1.1	3/16-1/2

3).Turning Boring and Facing Holder



Order No.	A(in)	B(in)	C(in)	D(in)	Tool bit range(in)
250-002	0.66	0.5	0.327	1.1	3/16-1/2

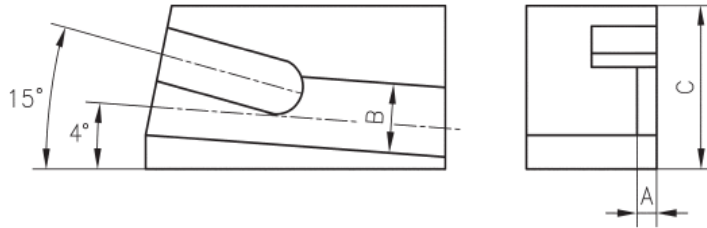
4).Heavy Duty Boring Bar Holder



Order No.	A(in)	B(in)
250-004	0.47	1.18

C(in)	D(in)
3/8	1/2

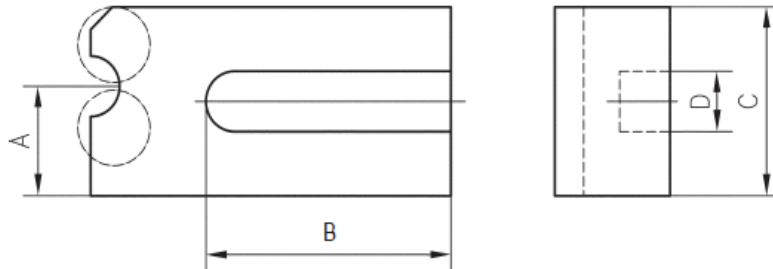
5).Universal Parting Blade Tool Holder



Order No.	A(in)	B(in)
250-007	0.126	0.55

C(in)	Blade height(in)
1.38	1/2

6).Knurling, Turning & Facing Holder



Order No.	A(in)	B(in)	C(in)	Clamping range(in)	Tool bit range(in)
250-010	0.53	1.77	1.18	3/16-1/2	1/2x 3/16 x 3/16